


CONSTRUCTION  
UNDERWAY!

See the progress! 



Delivering Q4 2025

**209,564 SF**

1300 Business Center Way, Edgewood, MD



Ben Meisels  
443.451.2614  
[ben.meisels@jll.com](mailto:ben.meisels@jll.com)

Rob Maddux  
443.931.3353  
[rob.maddux@jll.com](mailto:rob.maddux@jll.com)



# Site Plan



Edgewood Logistics Center

EDGEWOOD LOGISTICS CENTER  
209,564 SF  
37 DOCK DOORS  
168 PARKING SPACES  
43 TRAILER DROPS

209,564  
Total SF

3,000  
AMPS  
of Power

168  
Parking  
Spaces

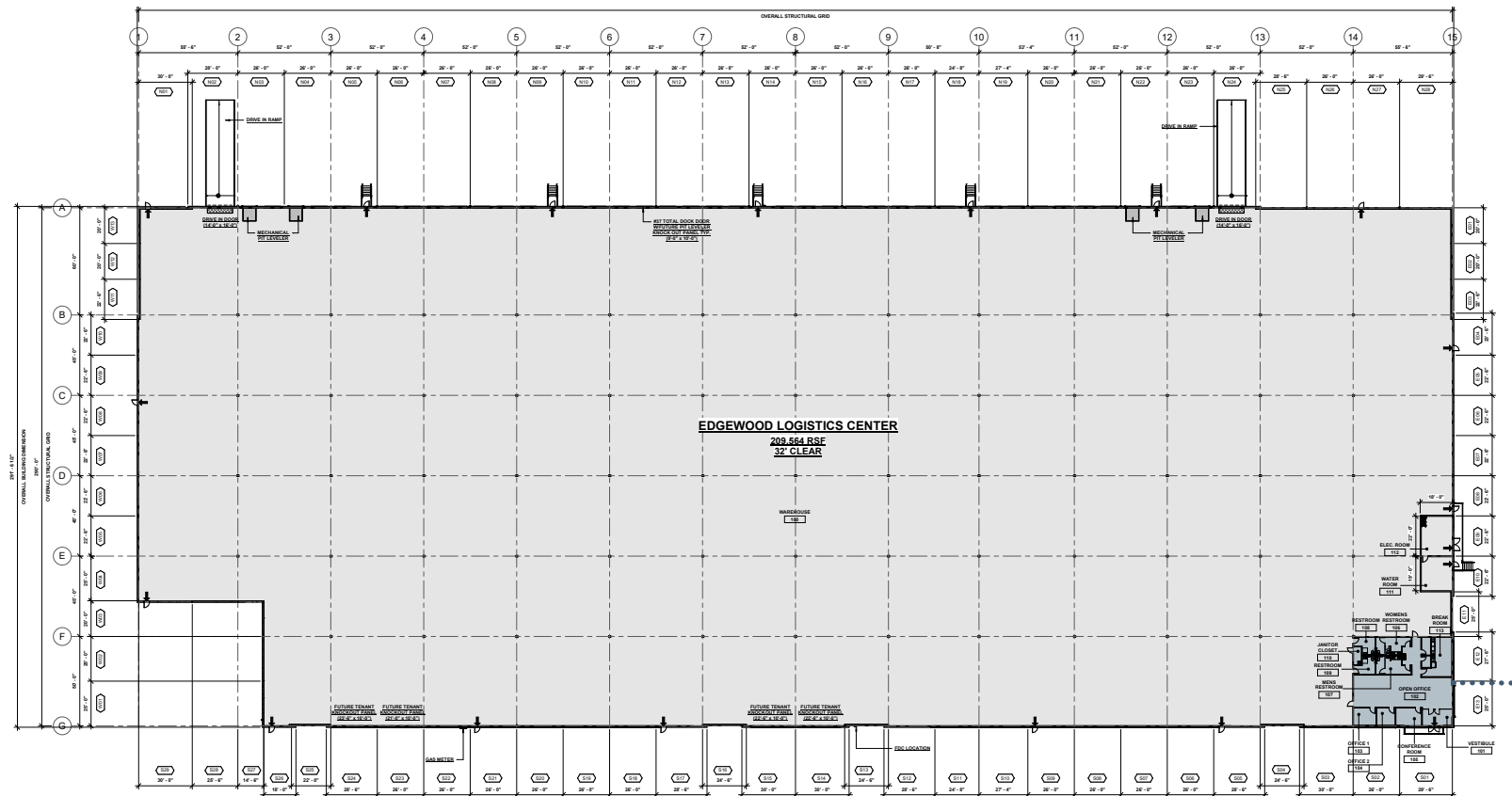
43  
Trailer  
Parking

37  
Dock  
Doors

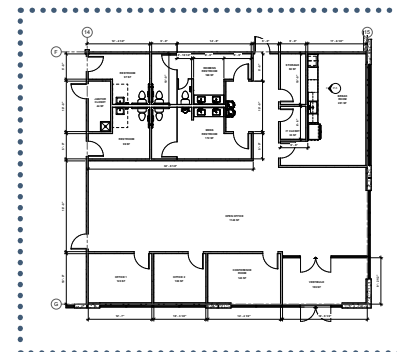




# Floor Plan



Office  
2,569 SF





# Location Map



1300 Business Center Way

1 mile / 2 minutes  
to I-95

Mountain Road

Philadelphia Road





# Regional Map

1300 Business Center Way

25 miles

50 miles

75 miles

21 miles  
to  
Baltimore, MD

52 miles  
to  
Wilmington, DE

62 miles  
to  
Washington, D.C.

84 miles  
to  
Philadelphia, PA

170 miles  
to  
New York, NY





For more information, please contact:

Ben Meisels  
443.451.2614  
[ben.meisels@jll.com](mailto:ben.meisels@jll.com)

Rob Maddux  
443.931.3353  
[rob.maddux@jll.com](mailto:rob.maddux@jll.com)



Although information has been obtained from sources deemed reliable, neither Owner nor JLL makes any guarantees, warranties or representations, express or implied, as to the completeness or accuracy as to the information contained herein. Any projections, opinions, assumptions or estimates used are for example only. There may be differences between projected and actual results, and those differences may be material. The Property may be withdrawn without notice. Neither Owner nor JLL accepts any liability for any loss or damage suffered by any party resulting from reliance on this information. If the recipient of this information has signed a confidentiality agreement regarding this matter, this information is subject to the terms of that agreement. ©2021. Jones Lang LaSalle IP, Inc. All rights reserved.

JLL Baltimore Industrial